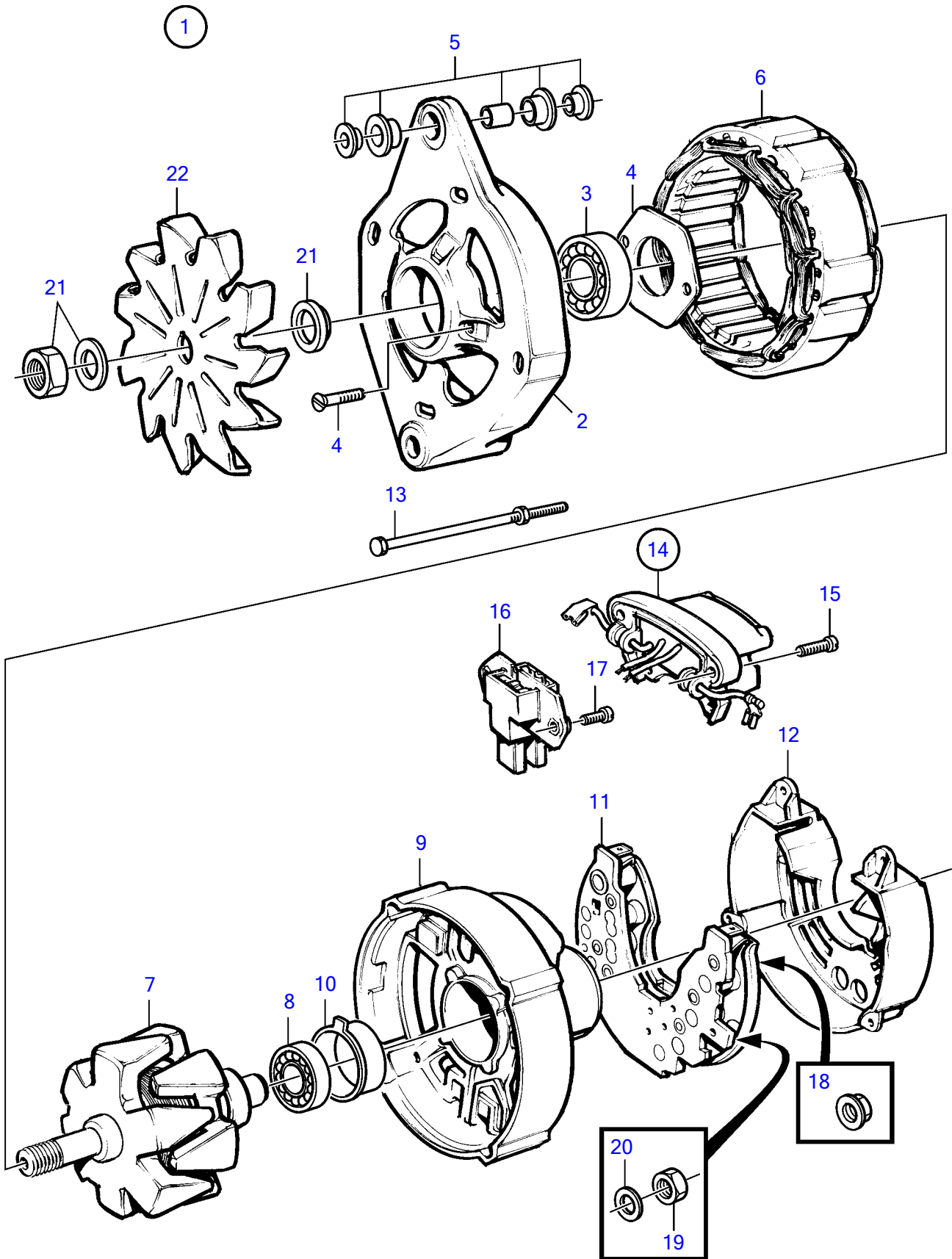


AD31L-A, AD31P-A, AD41L-A, AD41P-A, D41L-A, TAMD31L-A, TAMD31M-A, TAMD31P-A, TAMD31S-A, TAMD41H-A, TAMD41H-B, TAMD41P-A, TAMD41L-A, TAMD41M-A, TMD31L-A, TMD41L-A



AD31L-A, AD31P-A, AD41L-A, AD41P-A, D41L-A, TAMD31L-A, TAMD31M-A, TAMD31P-A, TAMD31S-A, TAMD41H-A, TAMD41H-B, TAMD41P-A, TAMD41L-A, TAMD41M-A, TMD31L-A, TMD41L-A

REF	PART NO.	QTY	DESCRIPTION	NOTES
1	872021	1	Alternator	28V 60A, repl by 873757
2		1	• Housing	
3	847708	1	• Ball bearing	(864350)
4	847709	1	• Bearing carrier	
5	840634	1	• Guide	
6	(864346)	1	• Stator	Obsolete part
7	(864347)	1	• Rotor	Obsolete part
8	864351	1	• Ball bearing	
9		1	• Housing	
10	(840629)	1	• Bearing race	Obsolete part
11	(1698689)	1	• Diode bridge	Obsolete part
12	847712	1	• Protecting casing	
13	847710	1	• Screw kit	
14	872368	1	• Regulator kit, with brush holder	
15	859312	4	• • Screw	
16	840632	1	• • Brush retainer	
17	859312	2	• • • Screw	
18	965483	2	• Flange nut	M5, D+, B-
	945407	1	• Flange nut	M6, b+
19	955779	1	• Hexagon nut	M4, w
20	941904	1	• Spring washer	For M4, W
21	847706	1	• Nut set	
22	(847707)	1	• Fan	Obsolete part